

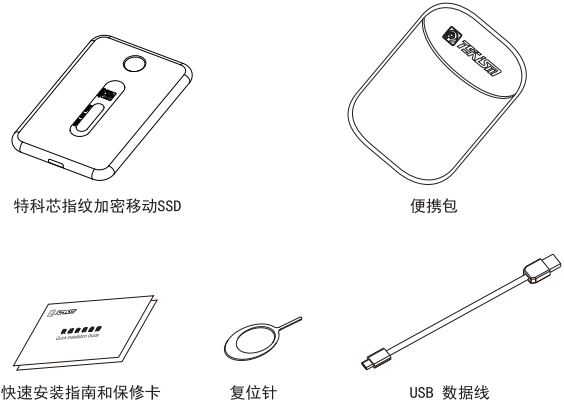
感谢您购买我们的产品。为了您能安全便捷的使用本产品，请在使用前仔细阅读本安装指南。

注意：本安装指南中显示的图片可能与实际产品略有差异，以您实际购买的产品为准。安装指南中包含的信息如有变更，恕不另行通知。

更多详细操作，请登录www.tekgts.com。

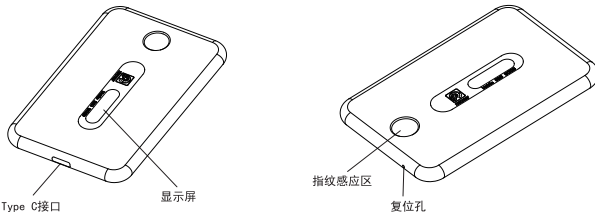
特科芯指纹加密移动SSD包装盒内容

打开包装后，请检查包装内的主要物件是否齐全。如有缺失，请及时联系我们。
(客服热线：400-895-5959)



1

了解您的指纹加密移动SSD



特科芯指纹加密移动SSD文件系统

您的移动SSD默认使用exFAT文件系统进行格式化，以便支持Windows操作系统和Mac OS。
请注意，在Windows操作系统和Mac OS上使用移动SSD时，对数据读取或写入可能存在限制。如果您计划只在单个操作系统上使用移动SSD，建议您使用该操作系统的相应文件格式，格式化您的移动SSD。
若您使用的是MAC OS或Linux的操作系统，请按照非软件注册的方式进行指纹的注册及管理工作，也可在Windows系统下完成指纹的管理后再行使用。
建议您在Windows系统下完成指纹的注册和管理，然后再到其他操作系统下使用。

2

系统要求

为了使您的移动SSD达到最佳的传输速度，必须满足以下要求。

1. 具有USB3. 1或USB3. 0的PC

USB3. 1采用更高效的数据编码系统达到10Gbps的速度，它可以完全向下兼容USB3. 0、USB2. 0设备。移动SSD的数据传输速度在使用USB3. 1时最佳，在使用较低版本(例如USB2. 0或1. 1)时，将导致性能下降。

* 使用USB3. 1或USB3. 0连接时，性能可能因各用户的系统而异。请确认与PC主机的兼容性。

2. 将移动SSD连接到PC以外的其他设备上的USB端口

将移动SSD连接到PC以外的其他支持USB的设备使用可能会受到限制，具体取决于相应设备的USB规范和操作系统。将移动SSD用于PC以外的其他设备(如支持USB的电视、打印机、音频播放器或其他设备)时，请首先查看设备的规范。

注意事项

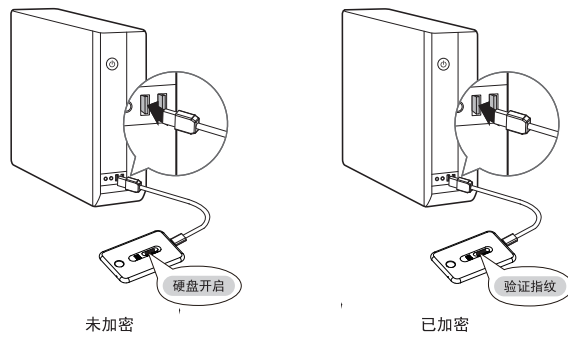
1. 使用时，建议将指纹SSD平放。
2. 请勿使产品进水，以免出现产品故障。
3. 请避免跌落、摔打、撞击本产品，以免造成产品损坏。
4. 请不要擅自拆卸或改装本产品，否则将失去产品保固。
5. 请避免使用尖锐物接触指纹感应器和显示屏，以免造成感应器和显示屏损伤。
6. 请保持指纹感应器表面干净，如果感应器表面脏污，请用干净的布轻轻擦拭。
7. 为了您的数据安全，建议您定期备份个人数据。本公司对您数据损坏或丢失不承担责任。
8. 建议用户将指纹SSD直接连接到电脑USB端口上，不建议使用转接线或者转接器等转接设备。

3

特科芯指纹加密移动SSD的使用——连接到PC

使用附带的USB数据线将特科芯指纹加密移动SSD连接到台式电脑或笔记本电脑。

PC和指纹SSD连接好后，未加密的SSD显示“硬盘开启”，PC端可以看到SSD硬盘；已加密的SSD显示“验证指纹”，验证成功后后显示屏显示“硬盘开启”，PC端才能看到SSD硬盘。



注：指纹加密移动SSD出厂时指纹库为空，可作为普通移动SSD使用，如需启动加密功能请根据我们提供的指纹注册方式完成注册以启动加密功能！

4

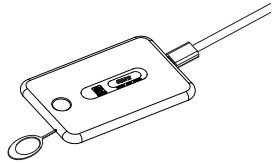
特科芯指纹加密移动SSD的使用——语言切换

特科芯指纹加密移动SSD具有中英文显示功能，该产品出厂语言为中文，您可以根据需要自由切换语言模式。

1. 软件语言切换方式：进入指纹软件管理界面，点击右上角 图标，即可看到“简体中文”和“English”两种语言，可根据自己需要选择语言(同时显示屏语言也同步切换)。



2. 非软件语言切换方式：SSD连接至电脑，用复位针插入复位孔，长按复位键不放，5秒后显示屏语言切换完成。



5

特科芯有限公司
Tekism Co., Ltd.
制造商：本产品由特科芯有限公司授权苏州普福斯信息科技有限公司生产
Manufacturer: This product is manufactured by Suzhou Performance Information Technology Co., Ltd. with the authorization from Tekism Co., Ltd..
地址：江苏省苏州工业园区港田路99号4座3F
Add: 3F, Building 4th, NO.99 Gangtian Road, Suzhou Industrial Park, Jiangsu Province, P.R.China
全国统一热线 (Hotline)：400-895-5959

特科芯指纹加密移动SSD的使用——指纹注册

特科芯提供了两种指纹注册方式，两种注册方式的操作步骤如下：

注册方式一：软件注册

(一) 注册指纹

在Windows XP/Windows 7/Windows 8/Windows 10系统下使用指纹管理软件 (Fingerprint.exe) 对指纹加密移动SSD进行指纹注册操作，操作如下：

1. 打开移动硬盘根目录下或电脑上已备份的“TEKISM_FingerPrint TEK2 PRO”文件夹，左键双击 Fingerprint 文件启动指纹管理软件，如遇电脑防病毒软件拦截提醒请允许软件运行，软件读取SSD成功后自动进入注册界面。如误删该软件请到特科芯官网(www.tekgts.com)下载。



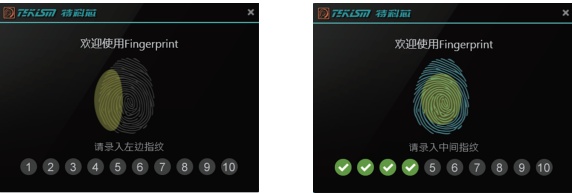
温馨提示：

- (1) 如果电脑不开指纹管理软件，该电脑需要安装微软的“dotNetFx40_Full_x86_x64.exe”程序，您可以从微软官网下载该程序。
- (2) 手指干湿度、指纹清晰度、手指洁净度、按压位置等因素均有可能影响指纹识别的有效性。我们建议您至少注册两组指纹。

若多次尝试注册无效，请联系特科芯客服(400-895-5959)。

6

2. 根据软件界面提示的位置，将需注册手指10次按压指纹感应器，为了提高指纹解锁成功率，请认真注册指纹。



注：每组指纹需要采集10次，一组指纹注册过程中请勿更换手指。

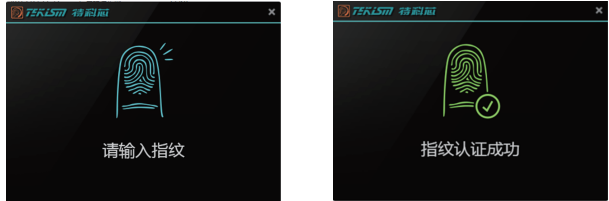
(二) 增加或删除指纹

1. 进入指纹管理界面，点击 图标增加注册指纹，点击 图标删除对应组指纹，点击 图标清除所有已注册指纹，名称栏位可自定义。指纹录入完成后及时关闭软件。



7

2. 已注册指纹的SSD，再次开启指纹管理软件，须先验证指纹，进入指纹管理软件界面后同第1点操作。

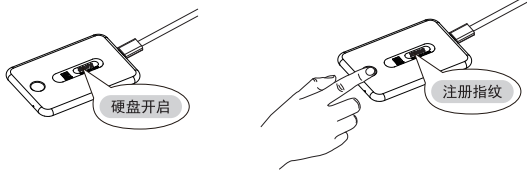


注册方式二：非软件注册

(一) 注册指纹

指纹SSD未加密情况下注册的具体操作如下：

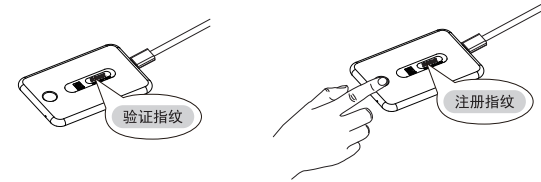
连接PC后，手指长按指纹感应器直到3秒后屏幕提示“注册指纹”，注册功能激活。屏幕提示“请按手指”时，按手指采集指纹，每次采集成功屏幕均有成功提示，若采集失败屏幕会提示“采集失败 请重试”，请在5秒内及时调整按压角度或力度重新采集，直到10次均采集成功，屏幕会提示“注册成功”，若10次采集未完成，屏幕会有“注册失败”提醒。



8

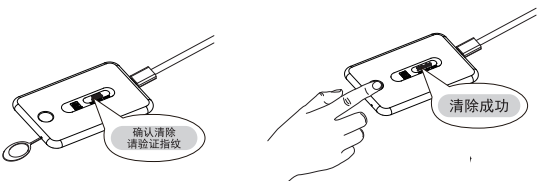
(二) 增加指纹

在您的指纹SSD已注册指纹的情况下，需用已注册手指长按指纹感应器验证指纹，3秒后屏幕提示“注册指纹”，注册功能激活，根据屏幕提示完成一组新指纹的注册。



(三) 清空指纹

连接PC后，用复位针插入复位孔，按下复位键后拔出，屏幕显示“确认清除 请验证指纹”，用已注册手指按压指纹感应器验证指纹，待屏幕显示“清除成功”时，指纹库被清空。



9

显示屏中英文简写对照表：

NO.	中文显示内容	英文显示内容	NO.	中文显示内容	英文显示内容
1	硬盘开启	Connected	9	清除失败	Delete Fail
2	验证指纹	Verify FP	10	清除成功	All Deleted
3	注册指纹	Start REG	11	数据传输	In Progress
4	请按手指	PlaceFinger	12	软件运行中	PC Master
5	成功"x"次	"x"Pass	13	指纹已满	ID Full
6	注册成功	Successful	14	注册失败	REG Fail
7	采集失败 请重试	Detect Fail	15	确认清除 请验证指纹	Delete FP
8	验证失败	Verify Fail			

注：“FP”代表“fingerprint”；“REG”代表“register”。

特科芯指纹加密移动SSD的使用——移除

如不需对SSD进行读写操作，使用“安全地移除硬件”的方式移除您的SSD。在安全移除后，为避免资料泄露，请及时拔掉硬盘。

注意：在没有执行“安全地移除硬件”功能的情况下拔出USB连接线可能会导致数据丢失或产品损坏。请确保在每次断开设备时都使用“安全地移除硬件”功能。因用户非正常使用移动SSD而导致的硬盘损坏或数据丢失，不在保修范围内。

10



特科芯移动固态硬盘
Tekism Mobile Solid State Drive

TEK2 PRO

快速安装指南
Quick Installation Guide

www.tekgts.com



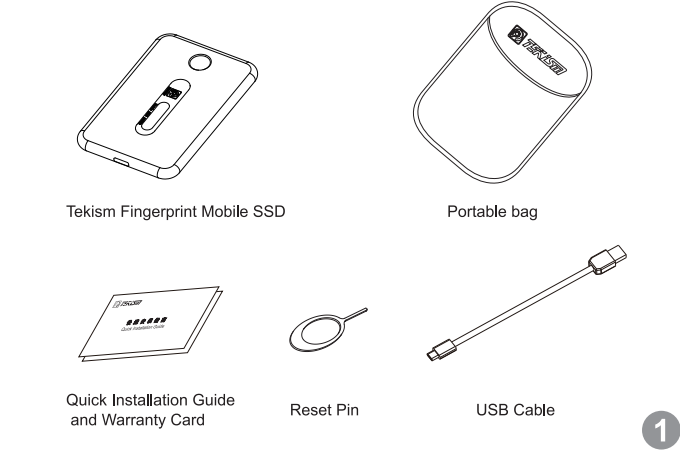
Thank you for purchasing TEKISM products. For optimum performance and safety, please read the installation guide carefully before operating the product.

Note: Pictures in this guide may slightly different with the real objects and the latter prevails. Any information herein is subject to change without further notice.

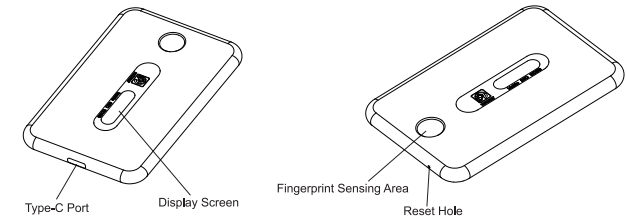
For more detailed info, please visit www.tekgts.com.

Package Contents for Tekism Fingerprint Mobile SSD

Open the package and check the completeness of attached items. If there is any missing, please contact TEKISM in time. (Hotline: 400-895-5959)



To Know the Fingerprint Mobile SSD



Documentation System for Tekism Fingerprint Mobile SSD

exFAT documentation system is in default for supporting Windows and Mac OS systems. Please note that there might be read or write limit when the SSD is running in Windows or Mac OS system. If the product is to be used in single operation system, it is recommended that you use the existing documentation system in the operation system to format the SSD.

If you are using MAC OS or Linux system, please register and manage the fingerprint in the form of non-software registration. Also you can manage the fingerprint in Windows before use.

It is recommended that you register and manage the fingerprint in Windows , then you can use it in other systems.

System Conditions

For the best transmission , please read the below:

1. Connecting PC with USB3.1 or USB3.0

USB3.1 adopts a more efficient encoding system which reaches 10Gbps and is backwards compatible with USB3.0 or USB2.0 equipment. The SSD provides the best transmission connecting with USB3.1 and lower performance with earlier versions (USB2.0 or USB1.1).

* The performance may vary due to the individuality of user systems when the SSD is connected with USB3.1 or USB3.0. Please check the compatibility between the product and the PC.

2. Connecting Non- PC Equipment with USB Port

Whether there might be limitation when the SSD is connecting with Non- PC equipment with USB port, depends on the USB standardization and the operation system inside of the Non- PC equipment. Please check the equipment standardization before connecting the SSD with Non- PC equipment (such as USB supporting TV, Printer, Media Player or others).

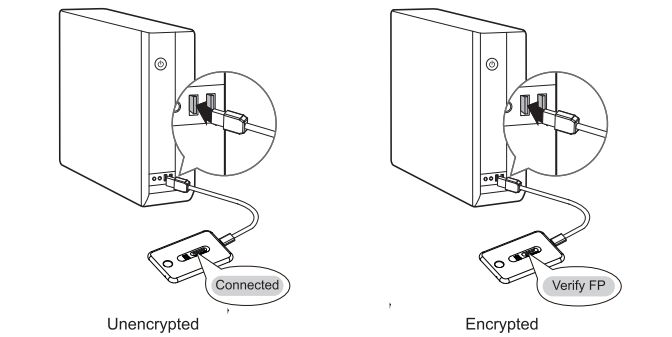
Notes

- When use it, please place it flatwise.
- Please don't let product into water so as to avoid malfunction.
- Please avoid falling, beating, impacting of the product for fear of damage to it.
- Please do not disassemble or refit the product privately, otherwise you will lose the warranty.
- Please avoid using sharp objects contact with fingerprint sensor and display screens that will cause damage to it.
- Please keep the fingerprint sensor surface clean. If the fingerprint sensor is dirty, wipe it with a clean cloth.
- For your data security, we suggest making regular backups of your personal data. We will not be responsible for your data missing or corruption.
- It is recommended that the user connect the fingerprint SSD directly to the USB port of the computer. It is not recommended to connect to PC via USB adapter.

The Usage of Tekism Fingerprint Mobile SSD- Connecting with PC

Please use the attached USB cable to connect Tekism fingerprint mobile SSD with desktops or laptops.

When the connection is done, "Connected" will display for the SSD before starting fingerprint locking function, and SSD icon will show on PC; "Verify FP" will display for the SSD already using fingerprint locking function, and after the SSD is unlocked with fingerprint, the SSD icon will be shown on PC.



Note:The fingerprint database is empty and the SSD can be used as normal ones until users start using fingerprint locking function. Fingerprint locking function can be started according to our fingerprint registration method.

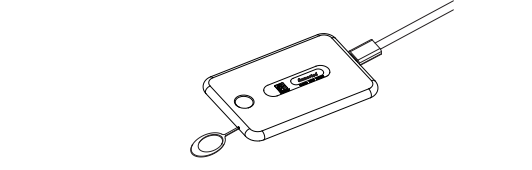
The Usage of Tekism Fingerprint Mobile SSD- Language Setting

Tekism Fingerprint Mobile SSD has both Chinese and English display functions.Chinese is default language,you can freely switch language mode as needed.

1. Language setting by Fingerprint management software: click Icon on the right bottom of the fingerprint management window, click according Icon in the following window to switch the language.(Meanwhile, the language of the display screen is synchronously switched)



2. Language setting by non-software : Connect the SSD to computer .Insert the reset pin into the reset hole and keep pressing the reset button over 5 seconds, language will switch.



The Usage of Tekism Fingerprint Mobile SSD- Fingerprint registering

There are two ways for registering the fingerprints---Software and Non-Software :

1. Software register

a.Register Fingerprints

Run fingerprint management software (Fingerprint. exe) in Windows XP/ Windows 7/ Windows 8/ Windows 10 system and register fingerprints as below:

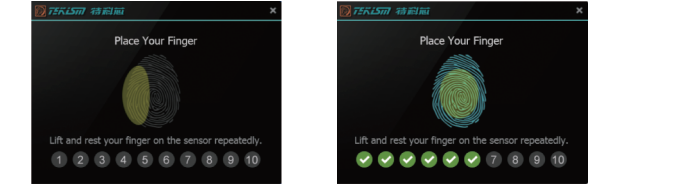
- Check the disk root menu and open the TEKISM_FingerPrint TEK2 PR0 document, or copy the document to the PC and then open it. Left double-click and start fingerprint management software. If the running confirmation is sent out by antivirus software, please click allow. Then SSD goes into registering screen successfully. If this software is deleted by accident, please download from Tekism official website www.tekgts.com.



Warm tips:

- If the fingerprint management software cannot be opened, the computer needs to install Microsoft's "dotNetFx40_Full_x86_x64.exe" program, which you can download from Microsoft's official website.
- Factors like finger wetness, fingerprint clarity, finger cleanness, press position may affect the validity of the fingerprint identification. It is suggested to register two groups of fingerprints at least. Please contact Tekism customer service (400-895-5959) if this process does not succeed after times trials.

- Please press the sensing areas for 10 times indicated on the software screen with one finger. For increasing unlocking efficiency, please register fingerprints carefully.



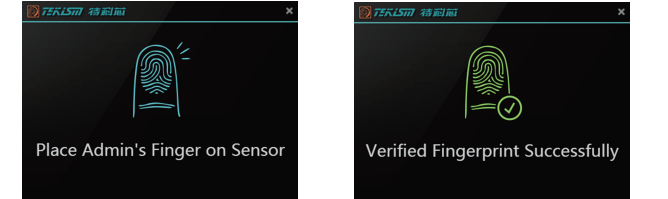
Note: Each fingerprint needs to be collected 10 times. Please do not change your finger in the process of registering a set of fingerprints.

b. Add or Delete Fingerprints

- Go into the fingerprint management windows, click to add fingerprints, click to delete the corresponding fingerprint and click to clear all registered fingerprints. The name column can be filled by yourself. Close the software in time after finishing the register.



- After registering, you must verify the fingerprints when reopen the fingerprint management software. As you enter the fingerprint management windows, you can follow the step i.



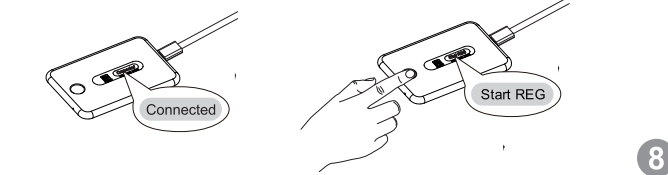
2 Non-software Register

a. Register Fingerprints

The specific operation of registering a fingerprint SSD without encryption is as follows:

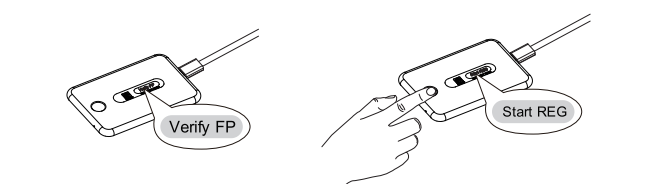
After connected with the PC, press one finger on the sensor for above 3 seconds Until "Start REG" displayed, that means register function launched.

When the screen prompts "PlaceFinger", press sensing areas to collect the fingerprint and each effective press will be followed by "pass" prompt on OLED display. If the collection fails, the screen will prompt "Detect Fail". Please adjust the pressing angle or intensity in 5 seconds to collect again. The screen will prompt "Successful" until the 10 collection has been successful. If the register fails, "REG Fail" will appear. Please restart the register procedure.



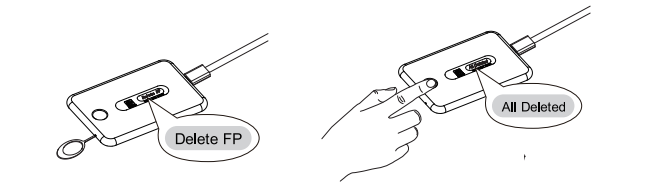
b. Add Fingerprints

After a SSD fingerprint code is created, it is required the registered finger to press the sensor until "Start REG" displayed. Complete a new set of fingerprints according to the screen prompt.



c. Delete Fingerprints

After connecting PC, insert the reset pin into the reset hole and take it out after pressing the reset button. When "Delete FP" displayed, use the registered finger to press the sensor until "All Delete" displayed, which means the fingerprint database has been cleared.



Chinese and English comparison list on display screen:

NO.	Chinese Display Content	English Display Content	NO.	Chinese Display Content	English Display Content
1	硬盘开启	Connected	9	清除失败	Delete Fail
2	验证指纹	Verify FP	10	清除成功	All Deleted
3	注册指纹	Start REG	11	数据传输	In Progress
4	请按手指	PlaceFinger	12	软件运行中	PC Master
5	成功"x"次	"x"Pass	13	指纹已满	ID Full
6	注册成功	Successful	14	注册失败	REG Fail
7	采集失败 请重试	Detect Fail	15	确认清除 请验证指纹	Delete FP
8	验证失败	Verify Fail			

Note: "FP" stands for "fingerprint" ; "REG" stands for "register".

The Usage of Tekism Fingerprint Mobile SSD- Removal

It is recommended that remove the SSD by clicking "Safe to Remove Device" after the using. Please unplug the USB cable of the SSD as soon as possible to avoid data leakage after running "Safe to Remove Device".

Note: It might bring data loss or product damage by unplugging the USB cable without running "Safe to Remove Device". Please use "Safe to Remove Device" each time to disconnect the SSD. Any product damage or data loss caused by improper usage will not be covered by the warranty service.

TOXIC AND HAZARDOUS SUBSTANCE OR ELEMENT NAME AND ITS CONTENT

Part Name	Toxic and Hazardous Substance or Element					
	Pb	Hg	Cd	Cr6+	PBB	PBDE
Component	○	○	○	○	○	○
PCB	○	○	○	○	○	○
Solder paste	○	○	○	○	○	○
Passive Device	✗	○	○	○	○	○
Active Device	○	○	○	○	○	○

○ :Indicates that the concentration of the hazardous substance in all homogeneous materials in the parts is below the relevant threshold of the GB/T26572 standard.

✗ :Indicates that the concentration of the hazardous substance of at least one of all homogenous materials in the parts is above the relevant threshold of the GB/T26572 standard.

The information of this table is based on the data provided by suppliers and results verified by our company. The using of all toxic and hazardous substances and elements is under the controlling to the bottom level with current technologies and our company will continue making efforts to reduce the concentration by improving technologies.

产品中有毒有害物质或元素名称及其含量

部件名称	有毒有害物质或元素					
	铅	汞	镉	六价格	多溴联苯	多溴二苯醚
元器件	○	○	○	○	○	○
印刷电路板	○	○	○	○	○	○
锡膏	○	○	○	○	○	○
被动元器件	✗	○	○	○	○	○
主动元器件	○	○	○	○	○	○

○ :表示该有毒有害物质在该部件所有均质材料中的含量均在GB/T26572标准规定的限量要求以下。

✗ :表示该有毒有害物质至少在该部件的某一均质材料中的含量超出GB/T26572标准规定的限量要求。

本表格提供的信息是基于供应商提供的数据及公司的检测结果。在当前技术水平下,所有有毒有害物质或元素的使用控制到了底线。本公司会继续努力通过改进技术来减少这些物质和元素的使用。